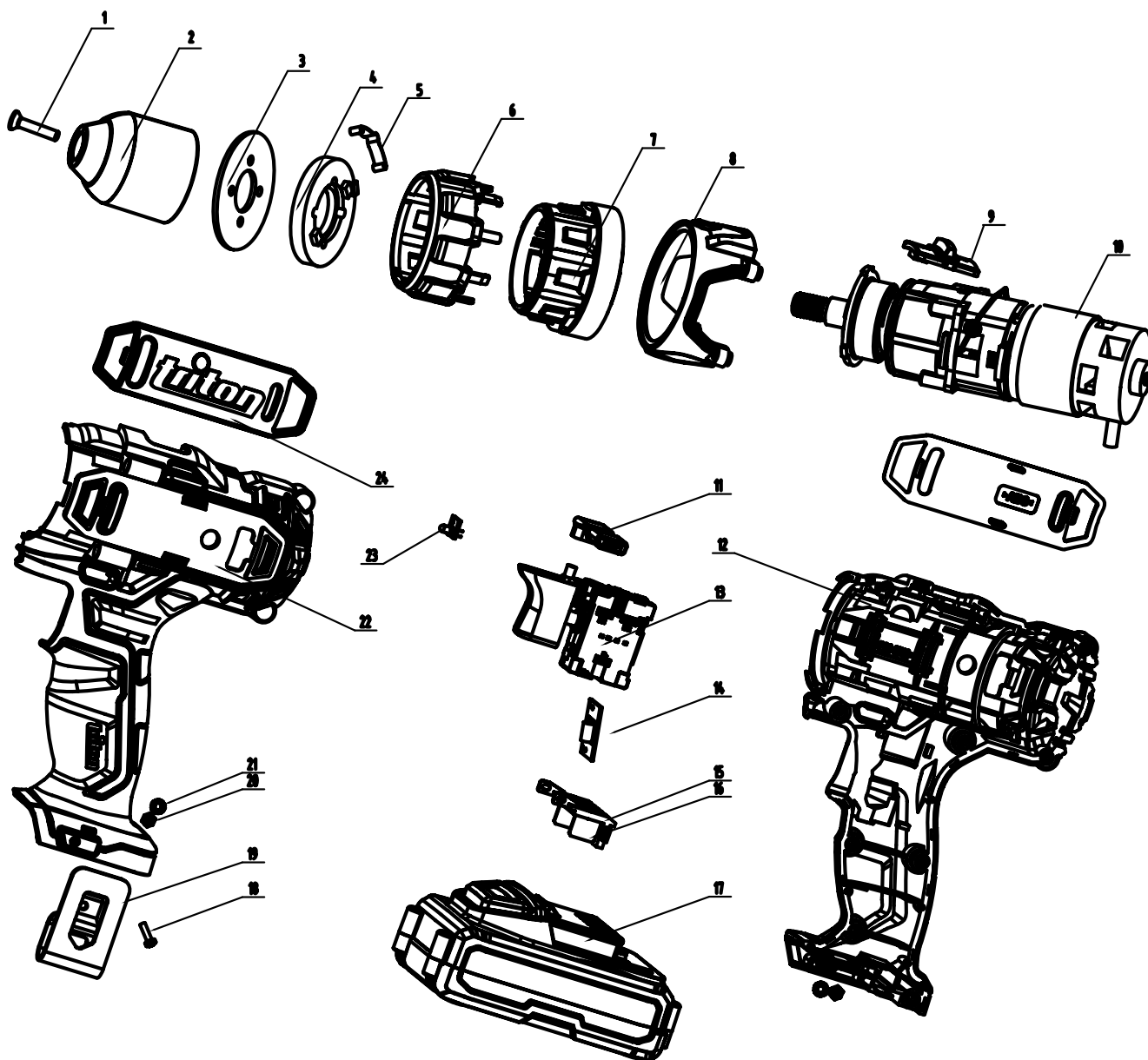




T20DD - Triton Drill Driver





T20DD - Triton Drill Driver

No	Description	Qty
1	Chuck Screw	1
2	Sanou Chuck	1
3	Plate	1
4	Limit Block	1
5	Click Spring	1
6	Front Cap	1
7	Selector	1
8	Gearbox Housing	1
9	Gear Selector Button	1
10	Gearbox and Motor Assembly	1
11	R/L Push Rod	1
12	Right Clam Shell	1
13	Switch	1
14	LED PCB	1
15	Insert Plate	1
16	Insert	2
17	20V Battery	1
18	Pan Head Screw M3*14	1
19	Belt Clip	1
20	Hexagon Nut M3	2
21	Washer	2
22	Left Clam Shell	1
23	LED	1
24	Finisher Plates	1
		set